

AT-SPZX80

SMALL FORM-FACTOR PLUGGABLE (SFP) MODULES

The AT-SP Series offers the latest industry standard in flexible, small form-factor full-duplex Gigabit Ethernet connectivity. These hot-swappable, fiber interfaces simply plug into a SFP slot on Allied Telesis SFP-compatible products. Configurations can be optimized to meet varied distance and service requirements.

Interoperability

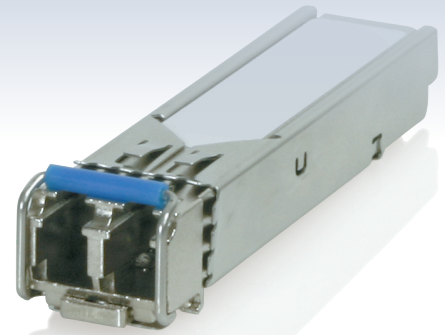
Allied Telesis Small Form Pluggables (SFP) fully comply with industry standard networking regulations. This compliance allows Allied Telesis SFP modules to be used on any networking equipment which complies with industry standards.

Compatibility

The AT-SP Series SFPs are compatible with all Allied Telesis products that support SFP uplink connections.

Options

The AT-SP Series offers short-haul and long-haul solutions. From the inexpensive AT-SPSX to the far-reaching AT-SPZX80, you have the option to extend your network to the distances that meet your performance needs.



Key Features

- » Fiber solution
- » Connect up to 80 km
- » Compact size
- » Flexible architecture
- » Plug and play ease-of-use
- » Self-locking mechanism

MODEL	MEDIA TYPE	WAVELENGTH	MAXIMUM DATA RATE	DISTANCE
AT-SPZX80	SMF	1550 nm	1.25Gbps	80 km

Ordering Information

AT-SPZX80
80 km 1000ZX SFP, 9 Micron SMF (1550 nm)

Specifications

Environmental

Operating temperature: -5°C to 70°C (23°F to 158°F)
Operating humidity: 0 to 85% non-condensing
Storage temperature: -40°C to 85°C (-40°F to 185°F)
Storage humidity: 0 to 80% non-condensing

Standard Data Rates Supported

Optical Gigabit Ethernet

Power Consumption

Power consumption: <1.1W

Optical Characteristics

Parameter	Min.	Typ	Max.	Unit
Transmit	0		5	dBm
Receive sensitivity			-24	dBm
Overload (saturation)		-1		dBm
Link power budget		24		dBm

Digital diagnostics: Yes

Fiber connectors: LC