

APC Back-UPS Pro 550

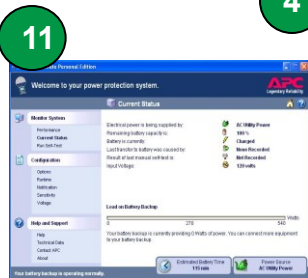
High performance battery backup and protection for office computers

The Back-UPS Pro provides you with abundant battery backup power, allowing you to work through medium and extended length power outages – *up to 55 minutes!* It also safeguards your equipment from damaging surges and spikes that travel along utility and network lines. The Back-UPS Pro also features “boost” automatic voltage regulation (AVR), which instantly adjusts low voltages to safe levels, so you can work indefinitely during undervoltage situations. Additional standard features make the Back-UPS Pro the perfect unit to protect your home network, gaming computer, or business’ productivity from the constant threat of power problems and lost data.



Product Features:

- 1 Master and Controlled Outlets - automatically turn off two idling peripherals to save electricity and money.
- 2 LCD (Liquid Crystal Display) provides easy to read information about battery and utility conditions.
- 3 “Boost” Automatic Voltage Regulation corrects undervoltages without draining the battery, saving battery power for when you need it most – outages.
- 4 3 “Battery Backup & Surge Protection” outlets keep CPU, monitor and other critical devices running when the power goes out.
- 5 3 “Surge Only” outlets protect printers, fax machines or other equipment without reducing battery capacity.
- 6 Ethernet surge protection guards against power surges traveling on network lines.
- 7 Push button circuit breaker enables quick recovery from overloads.
- 8 Both USB and serial connectivity allow management of the UPS via your computer.
- 9 3 yr warranty in E.U. (2 years for all other regions) and a €150,000 or £75,000 Equipment Protection Policy.
- 10 Automatic Diagnostic Testing ensures your unit is ready when you need it.
- 11 Auto shutdown software:
 - Gracefully shuts down system when battery is low
 - Records utility power and battery conditions
 - Allows for customized set up of your battery backup



Back-UPS RS 550 Specifications

Model Number	BR550GI
Output	
Output Capacity	550 VA / 330 Watts
Output Voltage / Freq. (utility)	230V / 50Hz
Output Voltage / Freq. (battery)	230V / 50Hz
Output Connections	6 total IEC outlets: 3 battery backup & surge, including Master control outlet 3 surge protection only, including 2 controlled outlets
Topology	Line Interactive
Waveform Type	Stepped Approximation to Sine Wave
Input	
Input Voltage / Frequency	230V / 50 Hz
Input Connection	1.83 meter cord with IEC plug
Surge Protection	
AC Power Surge Protection	All outlets
Data Line Surge Protection	Network line (10/100 Base-T Ethernet)
Physical	
Unit Dimensions (H x W x D)	310mm x 190mm x 91mm
Unit Weight	6.53 Kg
Shipping Dims. (H x W x D)	442mm x 252mm x 138mm
Shipping Weight	7.71 Kg
Color	Black
UPC Code	731304266884
Battery	
Battery Type	Maintenance-free, sealed lead-acid battery, leakproof
Management	
Alarms	Visual (LCD) and audible alarms
Auto-Shutdown Software	PowerChute Personal Edition (with USB & serial communications)
Safety	
Certification/Approvals	TUV-GS, GOST, CE, C-Tick/A-Tick, KETI, TISI

APC by Schneider Electric

132 Fairgrounds Rd
West Kingston, RI 02892
Tel: 401-789-5735
800-800-4272
Fax: 401-789-3710
www.apc.com

